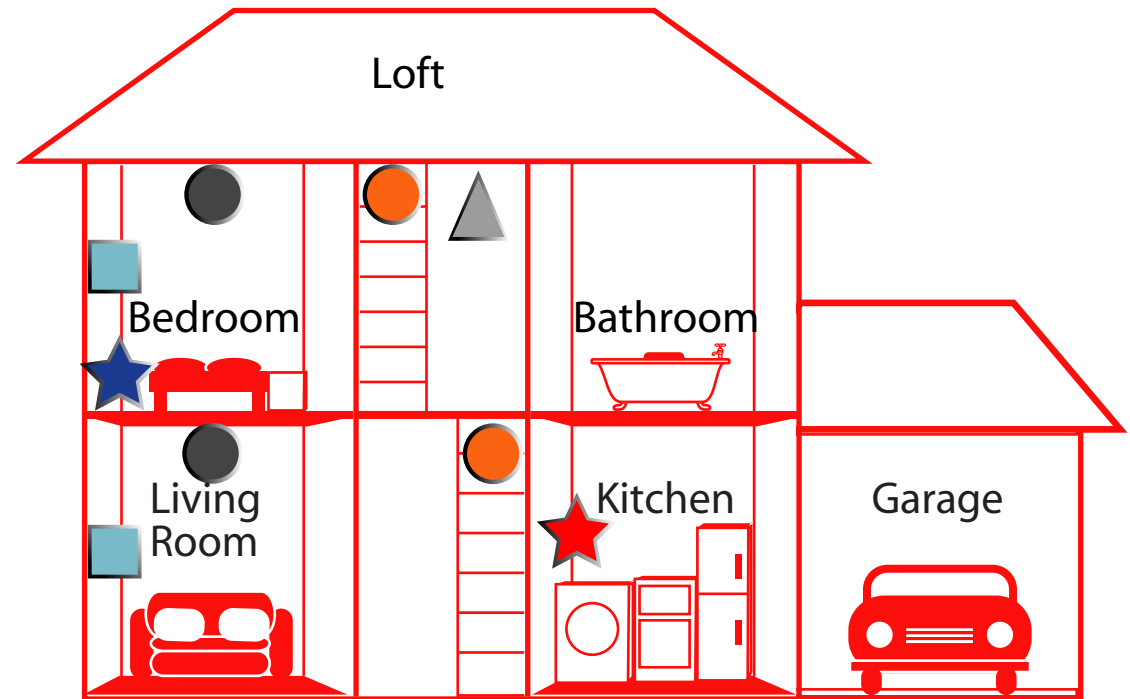
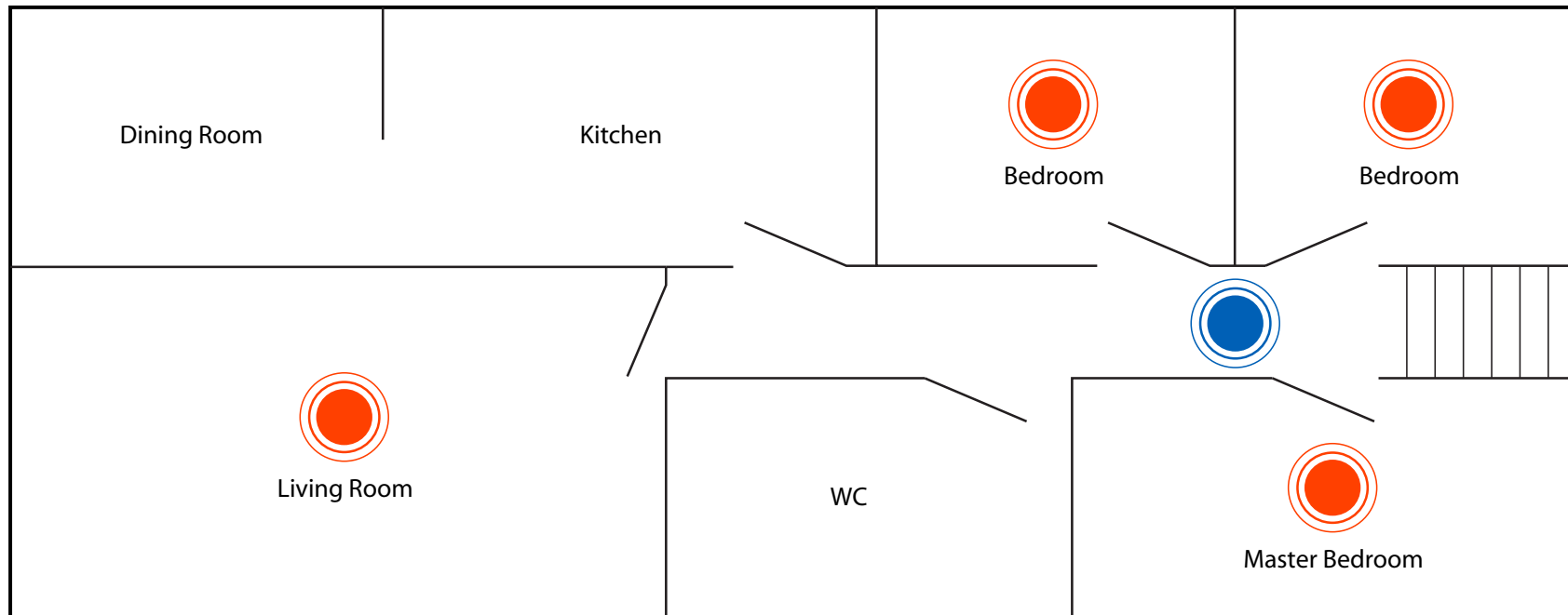


# First Alert®

## Installation

- Smoke Alarm ● - general purpose alarm
  - - with pause button
  - - with long-life battery
- Smoke alarm with Escape Light
- ▲ Combination Carbon Monoxide and smoke alarm
- Carbon Monoxide alarm
- ★ Fire blanket
- ★ Escape ladder

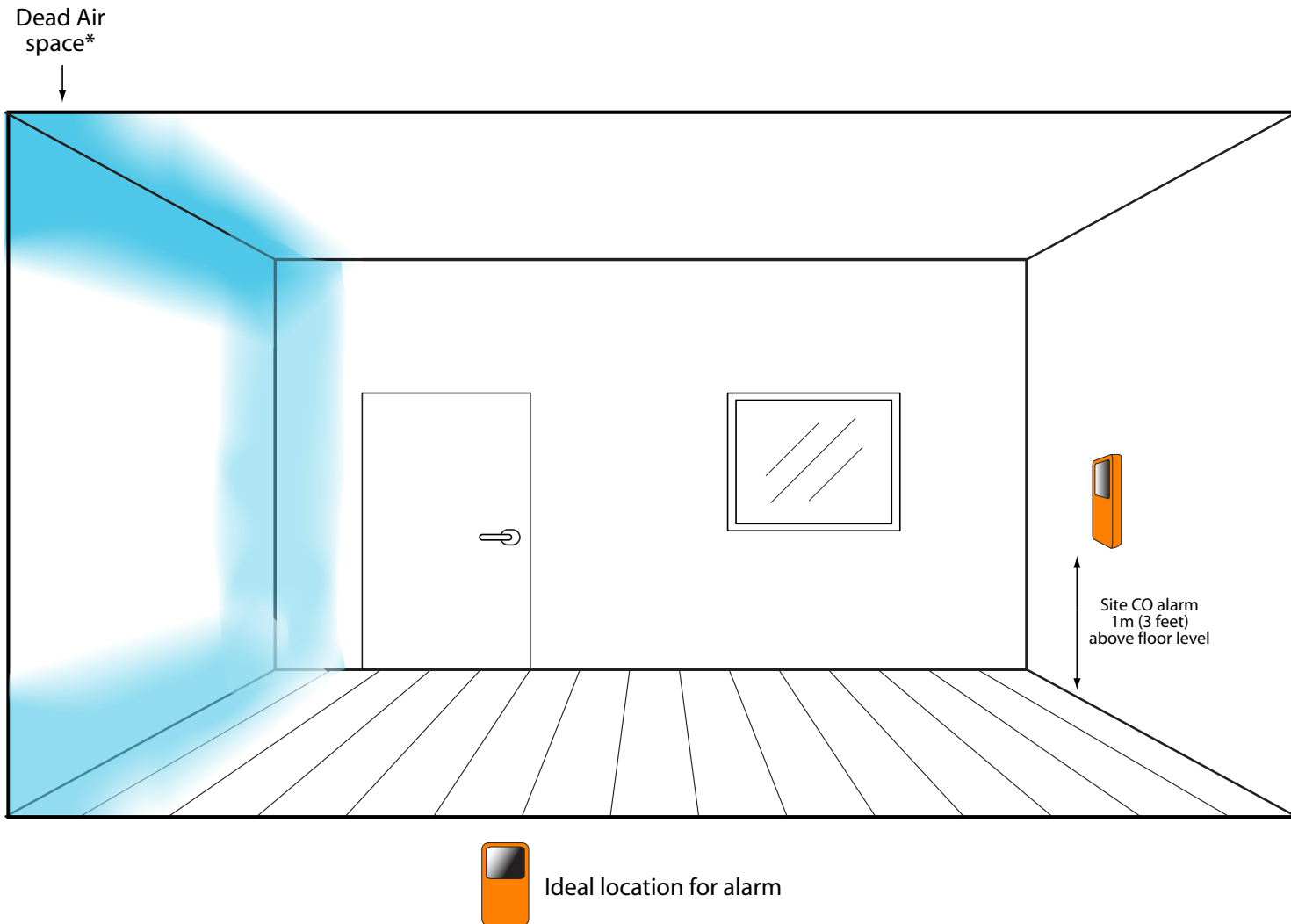




Smoke detectors for maximum protection



Smoke detector for minimum protection



\*Dead Air Space:- is a part of a room where air can not circulate