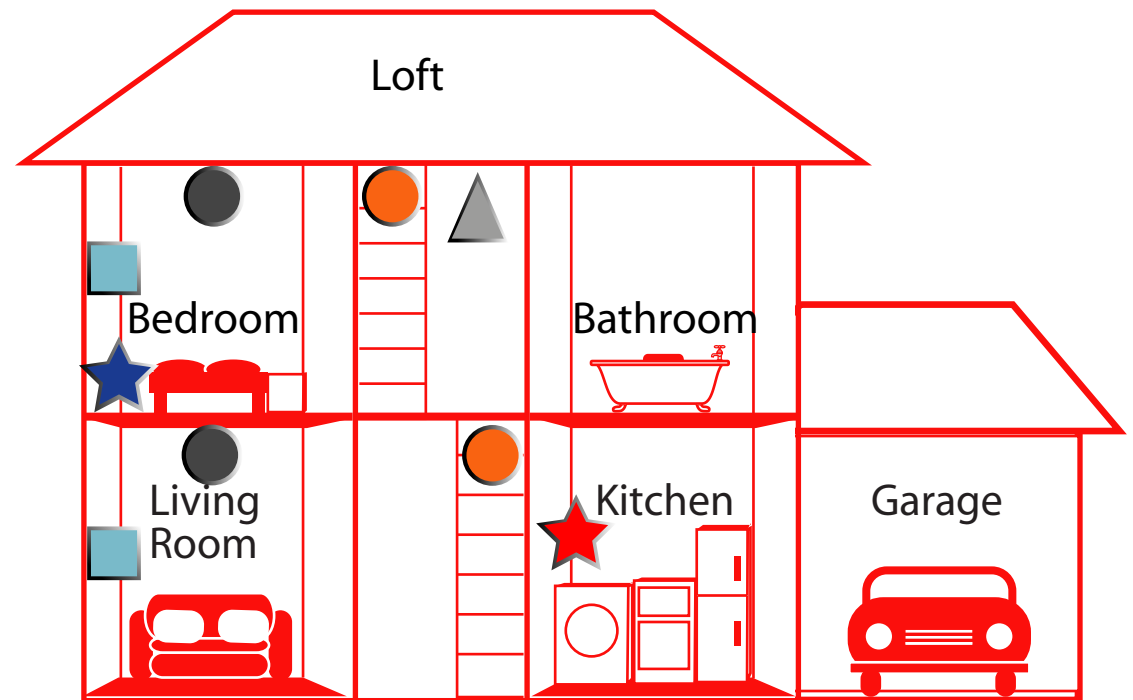
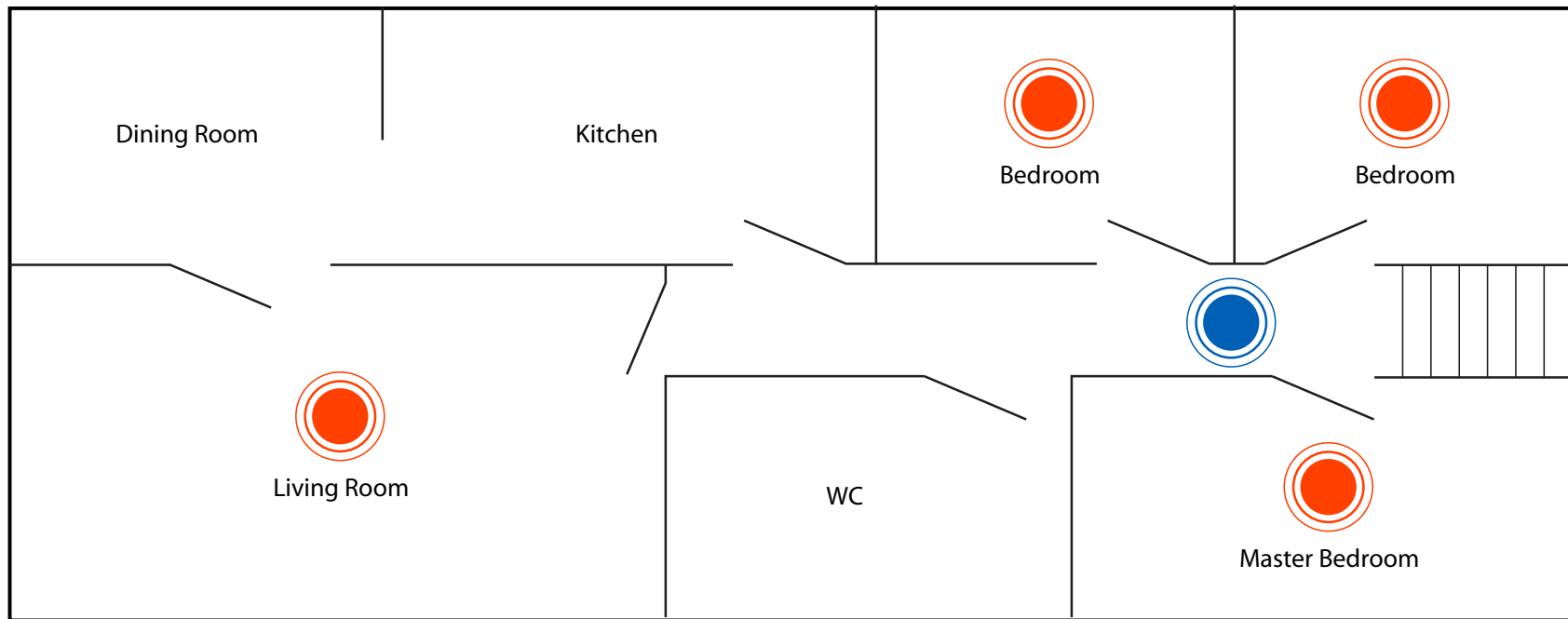


First Alert[®]

Installation

- Smoke Alarms
 - - general purpose alarm
 - - with pause button
 - - with long-life battery
- Smoke alarm with Escape Light
- ▲ Combination Carbon Monoxide and smoke alarm
- Carbon Monoxide alarm
- ★ Fire blanket
- ★ Escape ladder



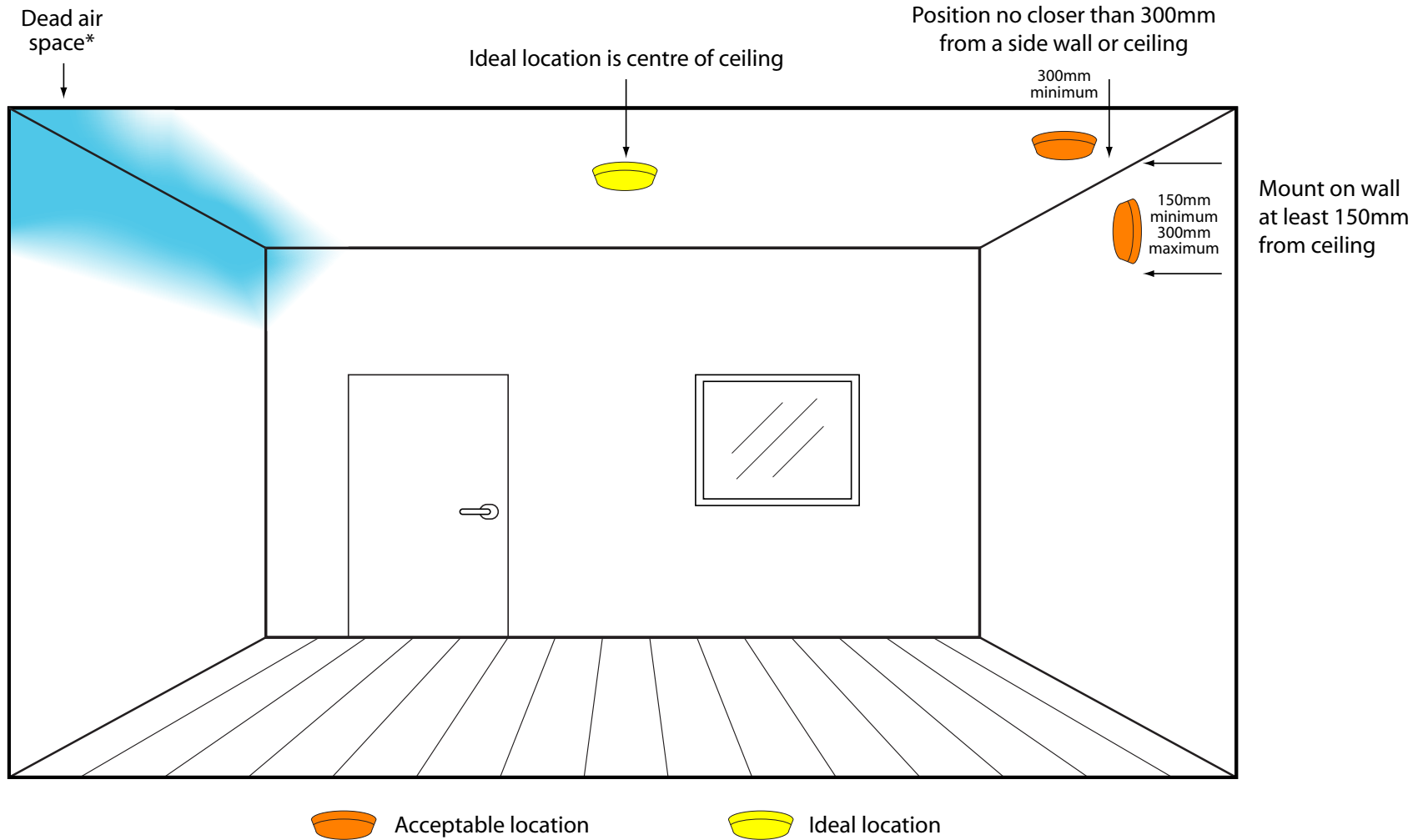


Smoke detectors for maximum protection



Smoke detector for minimum protection

Smoke alarm location guide



*Dead Air Space:- is a part of a room where air can not circulate

Smoke Alarm Installation guide



Step 1:
Mark screw holes using base.

1



Step 4:
Insert battery into alarm.

4



Step 2:
Drill screw holes.

2



Step 5:
Lock alarm onto base, making
sure alarm is secure.

5



Step 3:
Secure base using screws provided.

3



Step 6:
Test alarm using the test button.

6